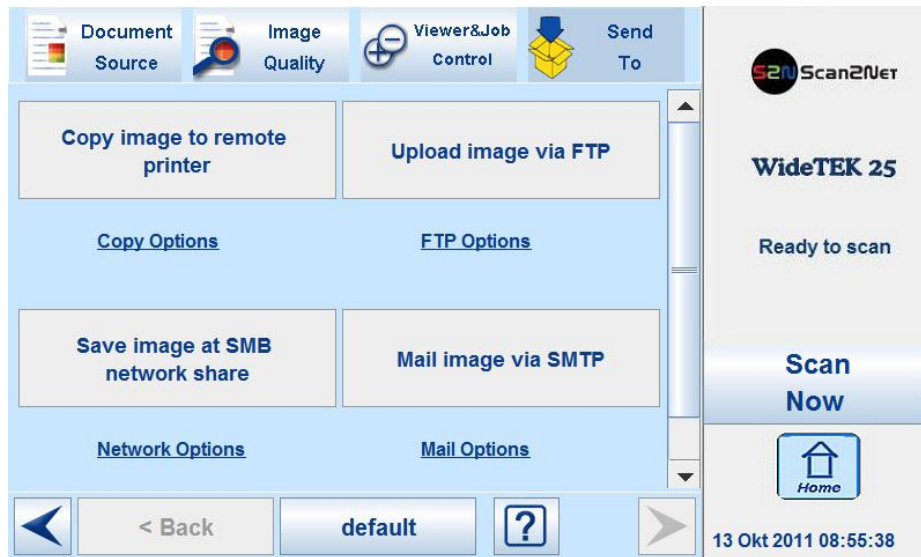


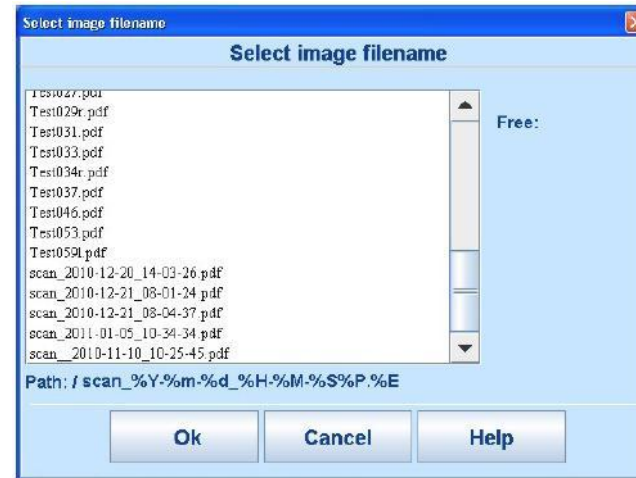
The fully redesigned WideTEK 25-600 was developed with self-service applications in mind.

Two USB connectors at the front of the device make it easy to walk up to the scanner, plug in a USB storage device, scan your source document and walk away -- without the need for a connected PC -- key to any self-service environment.



Once they have scanned their documents, they can check the files stored on their USB device by selecting the link [USB Options](#).

This displays a list of files contained on their device, letting users check to ensure that all files are stored.



- ✓ Two robust, industrial quality USB ports
- ✓ Immediate availability of scans on a take-away device, virtually paper-free
- ✓ True stand alone solution