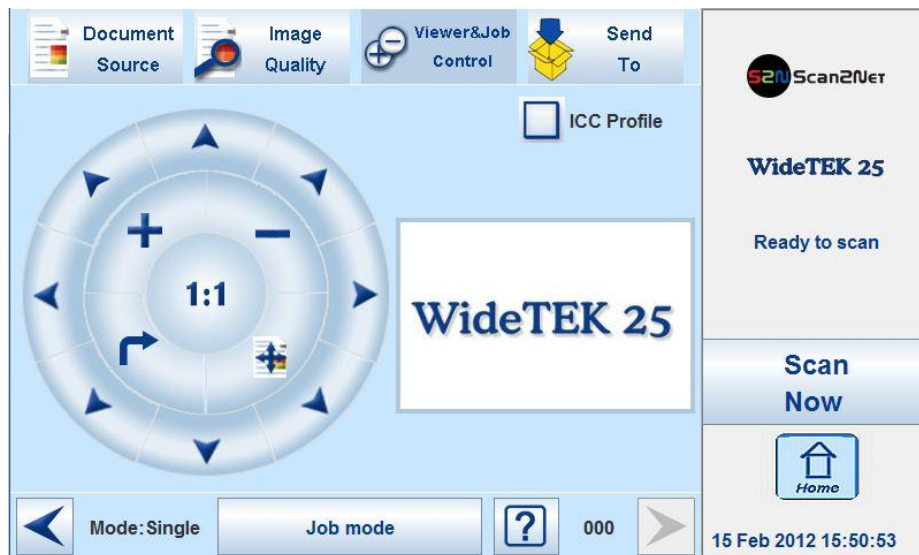


The fully redesigned WideTEK 25-600 has its own 7.2 inch touchscreen and a PC equipped with a dual core 1.8GHz processor, 2GBytes of DRAM and a 1Gbit network connection.

The WideTEK 25 is a complete solution -- ready to scan as a standalone device. Unlike nearly all competing scanners, customers purchasing the WideTEK 25 will incur no additional costs for external PCs, monitors or additional software.



Running its' own PC has many advantages. Other scanners have to specify the PC being used with respect to speed, memory, operating system and other factors before they

can specify scanning speeds, maximum scanning width and length. The WideTEK 25 is different. Whether you scan via the built in touchscreen, via a TWAIN enabled software or even with an iPad or Android tablet PC or smartphone using Scan2Pad, our new app for mobile scanning and image storage; the scanning performance remains the same – ultra high speed and brilliant image quality.

The WideTEK 25-600 is a true network scanner and installs very easily into today's office infrastructure. The scanner does not need any driver software or interfaces. It is immediately ready for operation with little installation effort – just assign an IP address and scan.

- ✓ PC and touchscreen inside, no hidden costs
- ✓ True stand alone solution
- ✓ iPad & Android mobile scanning using Scan2Pad
- ✓ Fast Gigabit network connection